



ROCKCOM PARTNERS LIMITED

'Quality services is our epitome'

20
23



COMPANY PROFILE

Civil Engineering Services, construction, electrical and telecommunication installation.

TABLE OF CONTENTS

Introduction	3
Vision & Mission	5
Health & Safety	7
Our Strategy	9
Our Services	10
Clientele	12
Why Rockcom?	13
Our Equipment	14
Organizational Structure	17
Featured Projects	18
Contact Details	21

A HISTORY ENRICHED WITH VALUE

A Future built to last.

Rockcom Partners Limited is a private limited Company Incorporated in Uganda in 2013 under the Uganda company's act (Cop 110) of the law of Uganda with its office in Kampala City in Uganda.

Rockcom Partners Limited is a quality-endorsed company that is categorized under construction management of buildings, roads, houses, renovations, road maintenance, rigging, and assembling of towers and other installations, supply of imports and exports materials, and other civil and telecommunications infrastructures. We offer a full range of pre-construction and construction services.

Project teams maintain a strong foundation of trust and mutual respect generated through positive relationships with clients, architects, engineers, subcontractors, and suppliers.

A company policy encouraging shared performance responsibility ensures the highest degree of professional service and results on all projects undertaken.

The project team at Rockcom Partners Limited thrives on challenging projects of unique character, offering a full range of pre-construction services. With its proven track record and dedication to excellence, Rockcom Partners Limited supports every project, from large, complex projects to smaller-scale buildings, with outstanding leadership and commitment, building upon its reputation as a dynamic contractor. We have a hands-on management philosophy, a keen team player's spirit, and we pride ourselves on quality workmanship and timely completion of projects.

Depending on the nature and timing of the contracts, we can undertake single contracts of up to 20 billion Uganda Shillings.

On all our contracts, we have highly motivated and competent foremen on-site at all times. As a result, we have extremely resourceful teams of individuals capable of implementing our works to the highest of standards in order to satisfy the expectations of our clients. This has been reflected in the steady growth that the company has enjoyed since its existence.

Each of these entities provides focused expertise for estimating, value engineering, commissioning, and self-performing core project components. Altogether, they help us coordinate projects more effectively, from early, accurate estimates to closeout. The result is better control over project variables and innovative solutions for our customers.

Team at Work



Vision & Mission

Vision



To establish ourselves as a foremost provider of comprehensive services in building, maintenance, civil engineering, electrical and telecommunication engineering, solar installations, and aluminum works in Uganda.

Mission



To perform for our customers the highest level of quality construction services at fair and market competitive prices.

To ensure the longevity of our company through repeat and referral business achieved by customer satisfaction in all areas including timeliness, attention to detail and service-minded attitudes.

To maintain the highest levels of professionalism, integrity, honesty and fairness in our relationships with our suppliers, subcontractors, professional associates .

CORE SERVICES OFFERED

- Telecommunication Infrastructure.
- Civil works (bridges, roads, structures, water supply and dams).
- Electrical engineering services.
- Solar Installations.
- Maintenance.
- Aluminum Works

CORE VALUES

a) Integrity

We maintain a high level of honesty with strong moral principles through sticking on agreement and ensuring customer satisfaction is attained.

c) Reliability

For all our works we do we ensure that we meet the target of attaining the required standards.

e) Site Safety

Safety is our priority by dedicating trainings with all involved parties on our projects and using a continuous improvement process to keep 0 injury goal both to persons and property.

b) Efficiency

Rockom ensures that with the with that for any given input we look at all process critically to provide highest amount of output to meet client satisfaction and other stakeholders.

d) Team Work

We adopt new methods and techniques that enable us to produce more and improved quality of construction services through exhibited levels of sharing among our working teams.





Health and Safety

We, as a company, have made detailed arrangements for the implementation of our health and safety policy as outlined:

- 1 To comply with relevant local and international health and safety legislations.
- 2 To set and maintain high standards of construction and installation safety with an annual review of The Rockcom Partners Limited safety policy.
- 3 To identify hazards, assess risks, and implement control procedures.
- 4 To ensure that staff, customers, and visitors are adequately informed of risks, and where appropriate, receive instruction, training, and supervision.
- 6 To document and review risk assessments.
- 7 To implement this policy through codes of practice, schedules, guidance notes, and training.

8

To safeguard the environment from the effects of QTE's service activities.

9

To monitor and review the effectiveness of controls.

10

To ensure the provision of a trained health and safety coordinator having adequate time, resources, and facilities to carry out their responsibilities.

11

To ensure that all sites conform to local and international standards.

12

To ensure that all personnel are issued with the necessary safety resources, such as personal protective equipment, and receive appropriate training in order to carry out their functions safely."

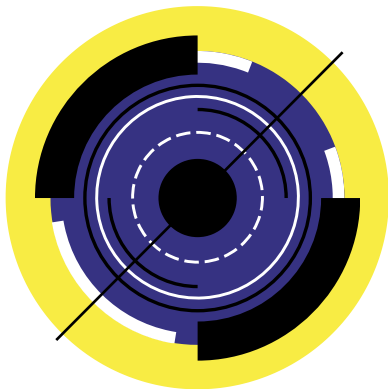


Our Strategy



Purpose

To be a leader in the engineering, procurement and construction industry by providing enhanced services, relationship and profitability.



Goals

Regional expansion in the engineering, procurement and construction fields and to develop a strong base of key customers.

Increase the assets and Investments of the company to support the development of services.

To build good reputation in the fields of engineering, procurement and construction and become a key player in the industry.

Our Services



We offer a full range of products from Project initiation to commissioning of Telecom towers, buildings, roads, bridges, electrical installations, maintenance, solar installations and aluminum works.

Our major areas of operation include the following;

BTS SITE BUILD:

We are able to offer a full suite of site acquisition services covering the following;

- ✦ Site surveys.
- ✦ Landlord negotiations.
- ✦ All General permit handling including Council and land board approvals.
- ✦ Environmental impact assessments.
- ✦ Ongoing management of lease agreements.
- ✦ Cable trenching and power access.

CIVIL WORKS AND ROAD CONSTRUCTION:

Experienced teams are managed construct sites customer specifications. Rockcom Partners Limited has a a verifiable track record of high quality site builds. Rigid quality control procedures ensure that all equipment provided to site is handled over to the client fully functioning with warranty compliant documentation according to ISO 9001 principles.

BSS:

Our qualified technical staff and subcontractors carry out Network design, project management, installation, commissioning, integration, optimization and maintenance of all major suppliers' base stations. Base station controllers and transcoders, optimization forms part of the integration and optimization process.

Our specific sites under BTS

- Mugabi site in Hoima
- Kanigire site in Hoima
- Kihuuko in Hoima
- Kitoole in Hoima
- Kinyahisiki in Kasese
- Kihanga in Hoima
- Kikwana site
- Cubu Achayo in Gulu
- Kakoba cell in Mbarara
- Massaja site in Kampala
- Gangu 2 in Kampala
- Nyamungabira in Kihili District
- Kasokoso in Kampala
- Osu site
- And many others



Clientele

Here are some of our Clients.



Quality Transmission Equipment (QTE)

Americas Tower Corporation

Ministry of Works Uganda

Uganda National Roads Authority (UNRA)

Centenary Bank

Cotton Foundation Uganda

DFCU Bank

Why Rockcom?



- ◆ Rockcom Partners Limited's mission is to build long-term relationships with our customers and clients. In order to fulfill this mission, Rockcom needs to exercise the discipline and control necessary to produce products and provide services of exceptional quality and reliability.
- ◆ Our company is committed to constant improvement in the quality and reliability of our products and services by listening to our customers and adapting to their needs, monitoring our product performance, and building our knowledge base through evaluation, application, and reliability testing, and rapidly deploying this knowledge into product improvement.
- ◆ The company has adopted the right quality system in the entire range of EPC operations, ranging from design to commissioning of projects. The company has documented a quality management system that fulfills ISO requirements in order to ensure that all aspects and stages of project implementation are governed by the quality procedure laid down by the order.
- ◆ All our works are carried out in accordance with specifications given by our customers while benchmarking international best practices. We do have modern material test facilities and equipment. The quality checks are involved in the system from the initial stages of design, procurement, and manufacture until the execution of the project. The health and safety of our workers is our first priority.



Our Equipment

The company has more than equipment shown below for surveying, mapping, construction and monitoring projects. The company owns most of the equipment.

ITEM OF EQUIPMENT	DESCRIPTION
Surveying and mapping	<ul style="list-style-type: none"> • Handheld global positioning system(GPS)
Mobile compressor	<ul style="list-style-type: none"> • Medium Rock drill
Concrete equipment	<ul style="list-style-type: none"> • Mobile concrete mixers • Concrete vibrators
Transport	<ul style="list-style-type: none"> • Dumper trucks(4-10 tons) • Pick up
Building construction tools	<ul style="list-style-type: none"> • Pick axe • Spades • Hack saw • Wheelbarrows • Steel bending machines • Roughcast equipments • Ceramic tile cutters • Terrazzo floor grinding and polishing equipment • Diesel generator • Welding unit

Leveling equipment	Dumper level
Compaction equipment	Plates compactor
Road construction equipment	<ul style="list-style-type: none">• Wheel loader• Excavator• Grader



Aluminium Fabrication

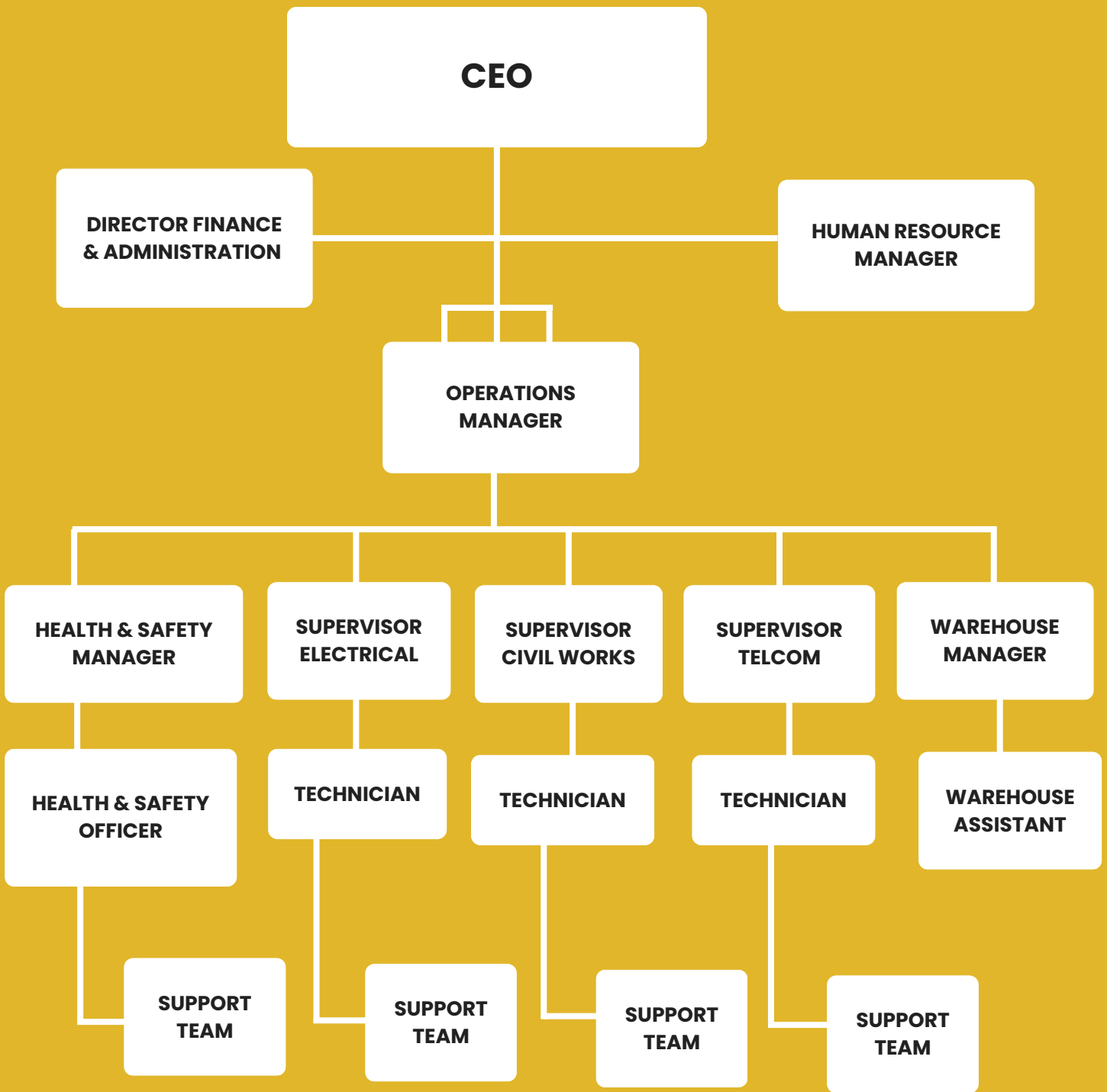
Rockcom Partners Limited excellence totally depends on the quality of the material used and craftsmanship supported by modern technology which results in unmatched uniqueness and cost effectiveness.

Consequently basic aluminum used in our structures and products are of guaranteed superiority. In addition of innovative and eye-catching material gives life to our Creations to meet the customer requirement satisfactorily. At the same time, the company's eco-friendly theme is always considered with every individual job undertaken assuring the fabricated environment for the customer.

Our products range stretching from the economy level up to the luxury class creates an opportunity for everybody to get their dream work done by us from the simplest domestic structures to the massive complex structures at an affordable and competitive market price.



Organizational Chart

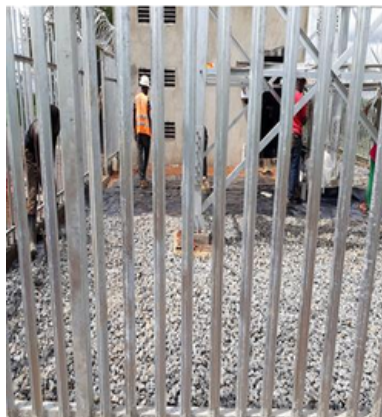


Featured Projects

CIVIL WORKS



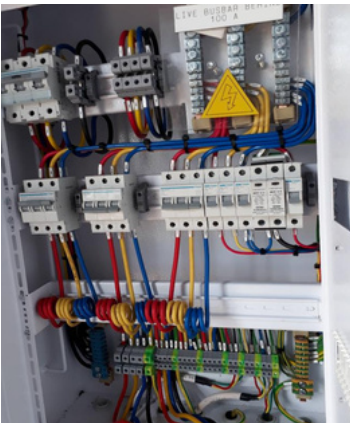
SITE BUILD



STRUCTURAL BUILDINGS



SITE BUILD ELECTRICAL WORKS



ROADS WORKS



Our Project Success.

Rockcom Partners Limited strives for excellence in every project. Through meticulous planning, diligent execution, and unwavering commitment, we achieve success that exceeds expectations. Our dedication to quality, reliability, and customer satisfaction drives us to deliver outstanding results, ensuring the prosperity and growth of our clients. With Rockcom, project success is not just a goal; it's a standard we consistently surpass.





**ROCKCOM PARTNERS
LIMITED**



CONTACT US

Phone call

+256782774963/+256774317117



Email Address

rockcomparterners@gmail.com



Website

www.rockcompartners.com



Office Address

**Rockcom Partners LTD,
P.O BOX 75813, Kampala Uganda.
Head Office, Ganesh Plaza,
Entebbe Rd,**

